

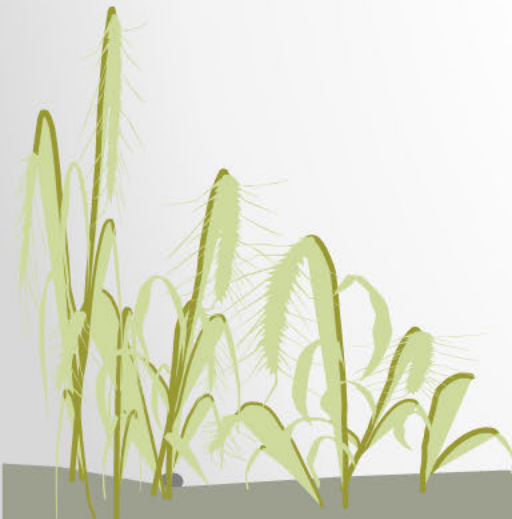


Online social activities to generate  
a sense of community

Fernanda Tomaselli

Lecturer & Land One Coordinator

[Fernanda.Tomaselli@ubc.ca](mailto:Fernanda.Tomaselli@ubc.ca)



# Context

- Land One objectives
- 2020-2021 cohort
- About 40 students (usually 15-20 attended each social event)
- Optional social activities (usually in the evenings) in Zoom every 2-3 weeks



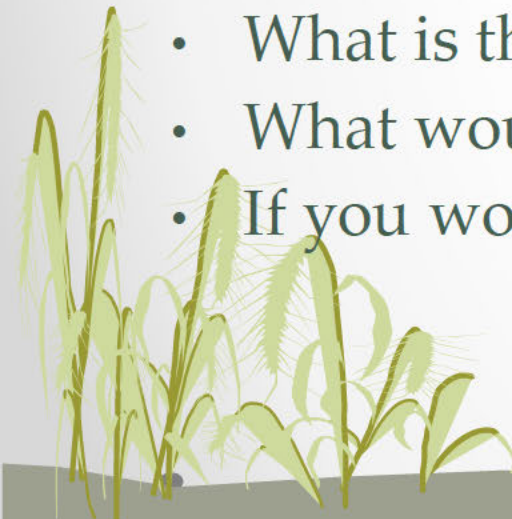
# Speed friending

Break-out groups (2 students) for 2 minutes then switch

Objectives: Break the ice and get to know each other

Examples of questions:

- If you could travel anywhere in the world, where would that be and why?
- If you could invite anyone, dead or alive, to dinner, who would it be?
- What is the most adventurous thing you have ever done?
- What would you take with you to a desert island?
- If you would be a super hero, which super power would you have?



# Trivias

Potatoes are native to:

21



31  
Answers

▲ Europe

◆ Middle East

● Africa

■ South America

Which Land One student has an identical twin?

28



6  
Answers



Exit preview

< 10 of 14 >



# Guess who?

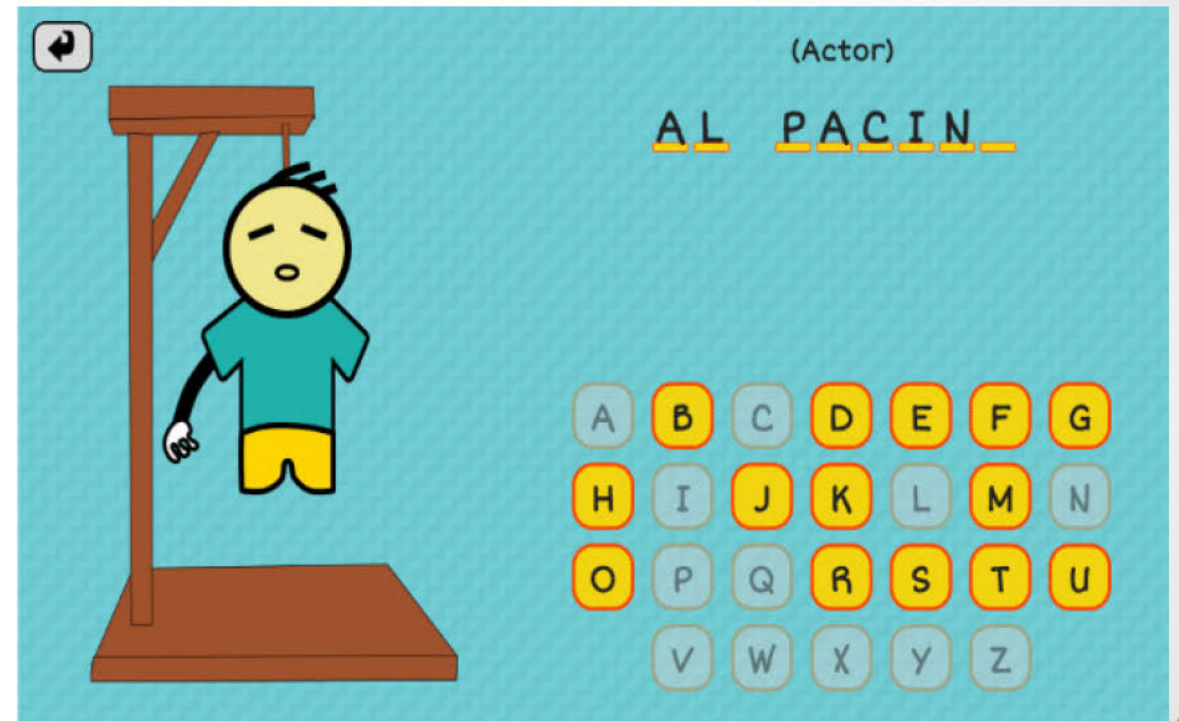
Baby Picture of Student



Remove



# Online games



# Emotional check-in

- **Break-out groups** (4-5 students) followed by **sharing** with the rest of the group:
  - How have you been feeling so far?
  - What is one strategy that is helping you cope/succeed in this term? (i.e. something that you are doing well)
  - What is something that you are doing that is NOT helping you succeed this term?
- Final **question/reflection**:
  - Is there anything that could be done by UBC, your faculty or your instructors to help you succeed?

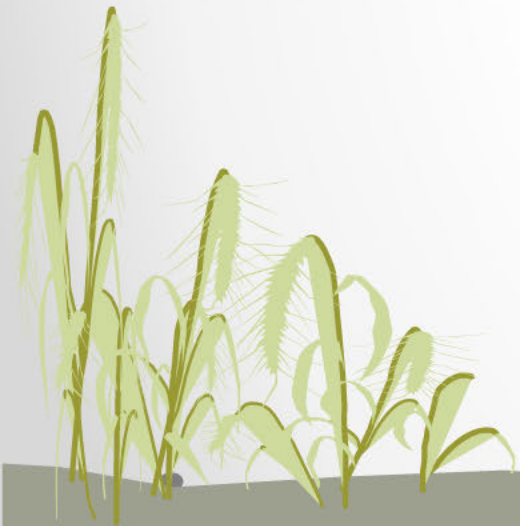


# Reflections

The image shows a Microsoft Word document titled "Document4 - Word" with a drawing application overlay. The Word ribbon includes tabs for File, Home, Insert, Design, Layout, References, Mailings, Review, View, Help, Format, and a search bar. The drawing application features a grid of drawing tools and a central canvas. The canvas contains several hand-drawn illustrations: a fishbowl with orange fish, a Christmas tree with red hearts and a blue bird, a snowman, a green alien, a blue elephant, a red and white striped candy cane, and a blue heart. Text on the canvas includes "Same Liam!", "love u more", and "10/4 9/4/4". The drawing application interface includes a toolbar with icons for erasing, drawing lines, shapes, and text, and a status bar at the bottom showing "Page 1 of 1", "0 words", "English (Canada)", and "110%".

# Impact

- I received support from other students in Land One (93%)
- Land One helped me with the transition to university (93%)
- I feel I belong to the Land One community (80%)



Thank you!

